

Dear Clients:

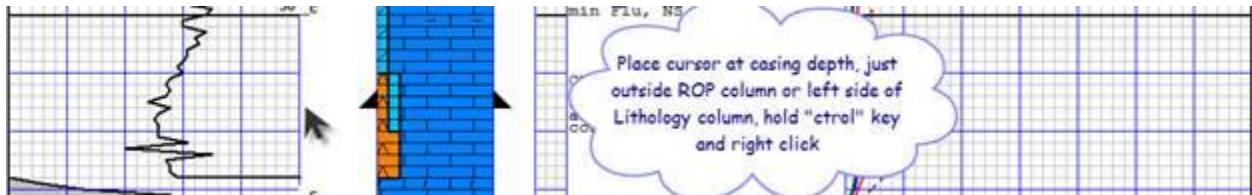
We know that many of you are already aware of the “Did you Know” topics that we’ve been sending out, and we appreciate your patience in our continuing effort to educate all of our clients. If you do not want to receive these e-mails or if you would rather have someone else within your organization get them, please let us know. We understand that many of you forward these e-mails to your loggers\units and we encourage those who are not, to do so, as it is a good way to inform your loggers, and especially trainees, of the many features of MainLog.

As always, please feel free to call us with any questions or issues.

Today’s “Did You Know” has to do with placing “casing points”, “connections” and “labeling gases” on the mudlog.

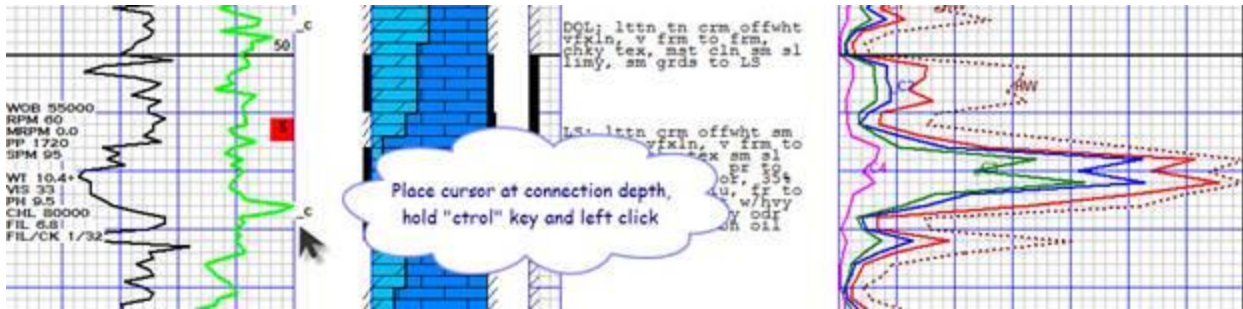
Casing Points:

At the depth you want the casing point on the log, place your cursor **just outside the right side of the ROP or just outside the left side of the lithology column** and **hold down the “ctrl” key and right click**. To remove casing point, repeat the same process at the depth the casing point is.

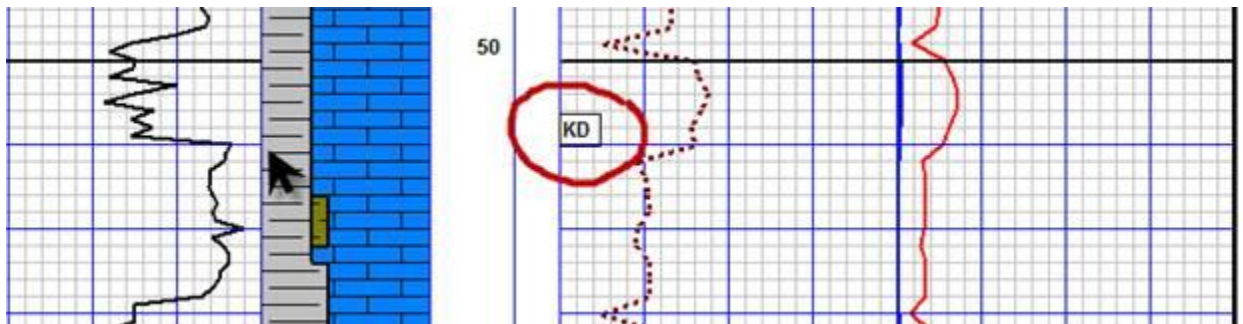


Connections:

At the depth you want the connections on the log, **place your cursor just outside the right side of the ROP** and **hold down the “ctrl” key and left click**. To remove connections, repeat the same process at the depth the connection is.



Note: Some clients use <_c > to designate the connection and others use < KD > as shown below.



Labeling Gases:

To label gases, **just hold down the "ctrl" key and right click in the gas column** at the depth you want the gases labeled. Check the appropriate gases and click save. To remove labels, repeat the process, uncheck the appropriate boxes and click save.

