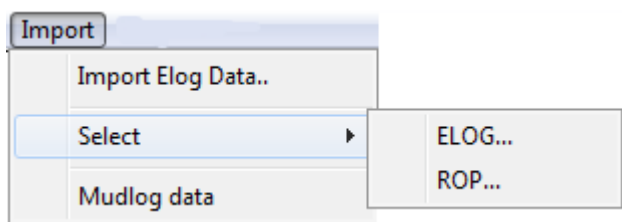


Dear Clients,

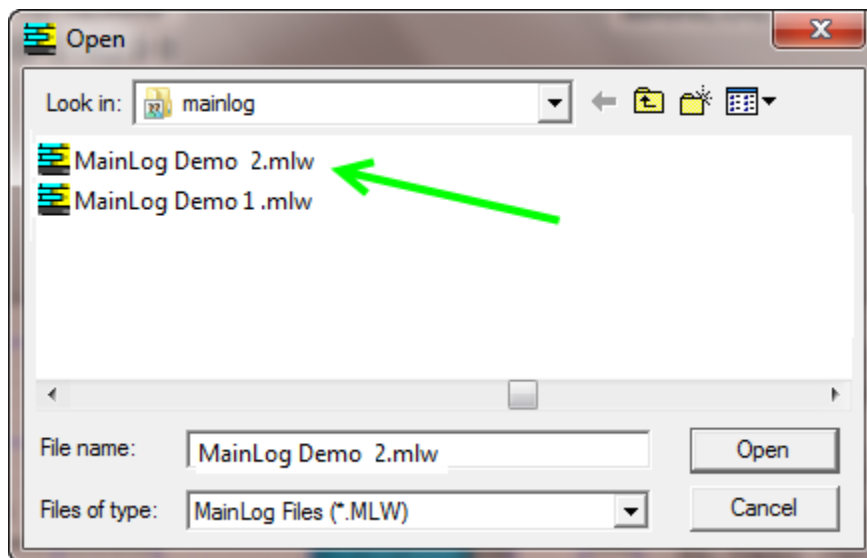
One of many jobs we loggers do is correlating to offset wells. When communicating with the company geologist or engineer, knowing where you're at in the section relative to nearby wells, is imperative. Today's "Did you know?" focuses on a few ways to accomplish that with MainLog.

One of the best ways is to import a gamma from a nearby well, but all too often it is not easy to obtain these from the client. If, however, you have logged a well with MainLog in the area you can easily import the ROP from that well, as long as the well is on your computer.

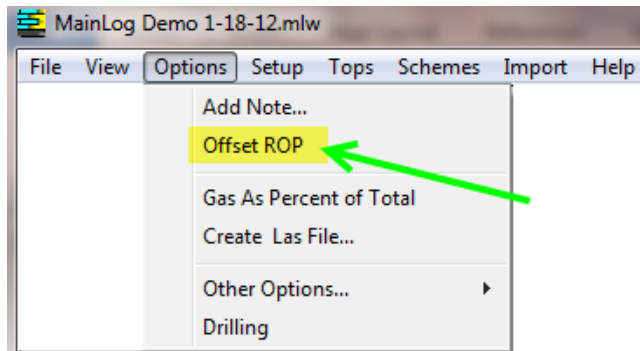
To import the ROP from an offset well click on **Import\Select\ROP**.



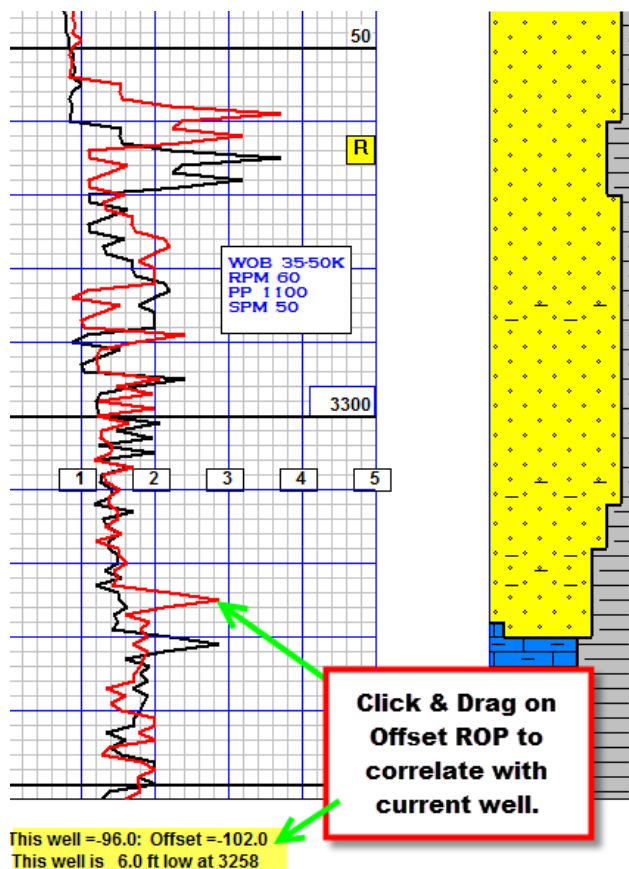
From the menu box that opened look in the mainlog directory or folder where the log may be (Archives), click on the well name of the log whose ROP you want to correlate with and click open.



Then go back to **Options** and click on **Offset ROP**.

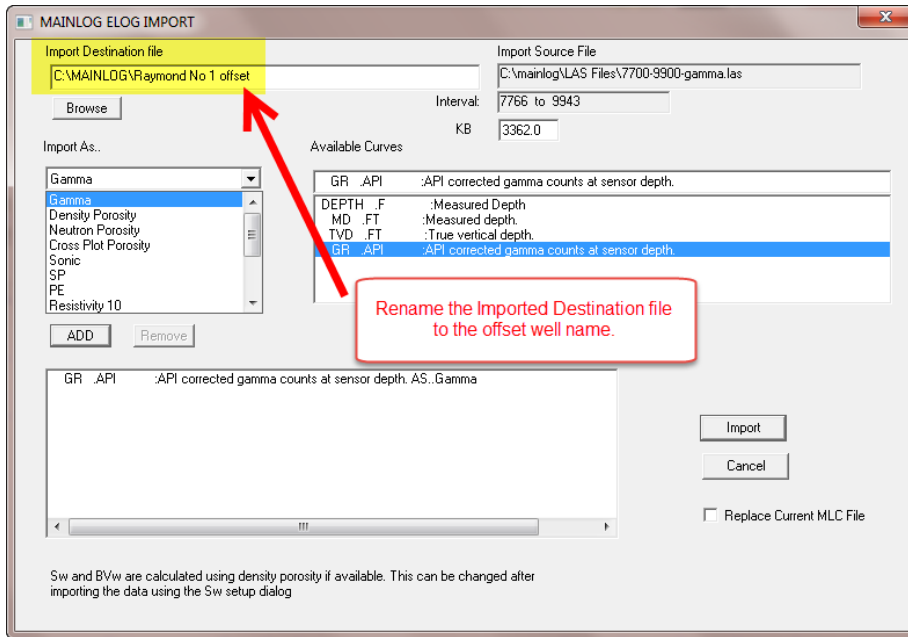


The offset ROP will now be on the log and can be “clicked and dragged” on, up or down, to correlate with the current well. At the bottom of the ROP column MainLog will display how high or low the current well is to the offset well. **This will only work correctly if you have the KB entered in the header file for both wells.** To remove the offset ROP, go back to Options and uncheck “Offset ROP”.

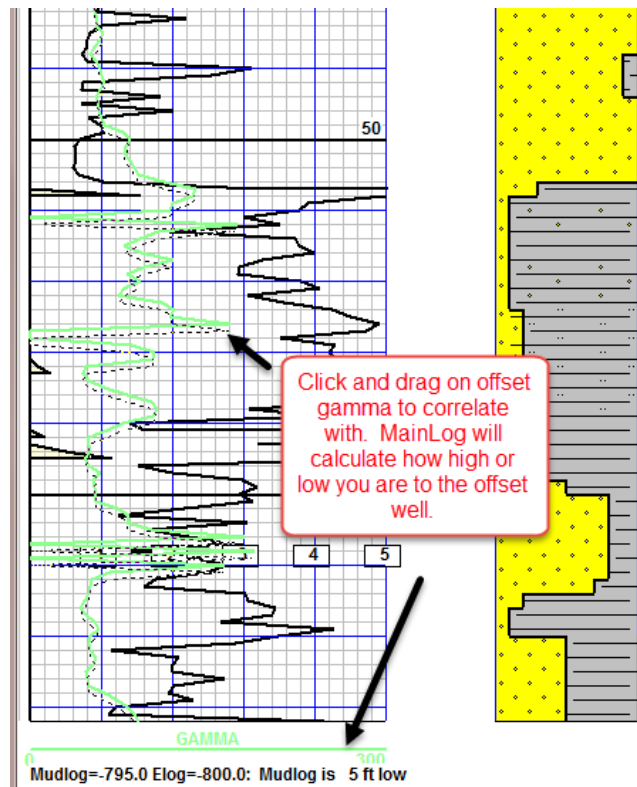


A second way to correlate with MainLog is by importing an offset gamma curve from a nearby well. Most are familiar with this feature of importing a gamma by clicking on **Import Menu** and selecting **Import E-Log Data**. When choosing the gamma LAS file to import you must **re-name the Import Destination File**. This would usually be the name of the offset well you are importing.

MainLog will create a <filename.mlc> for each offset gamma you import. That way you can select the curve you want to correlate with by going to **Import>Select** and then choose the well you want to correlate with. It is imperative that you have the KB in your header file and that the correct offset KB is also shown on the MainLog ELOG Import menu.

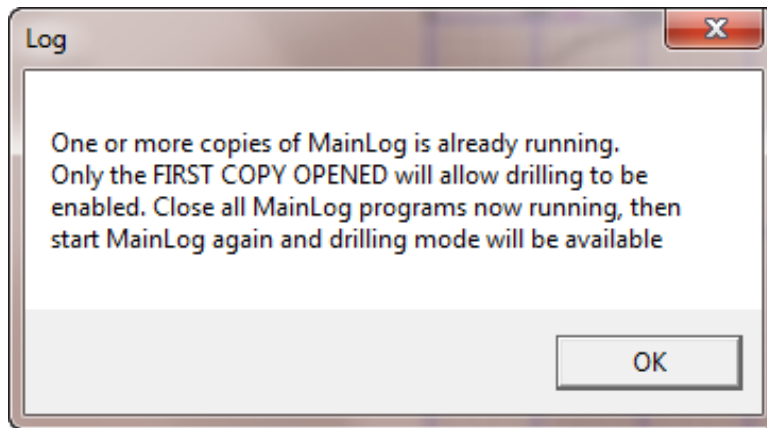


By clicking and dragging on the offset gamma MainLog will show how low or high you are to the offset well at the bottom of the ROP column as shown below.

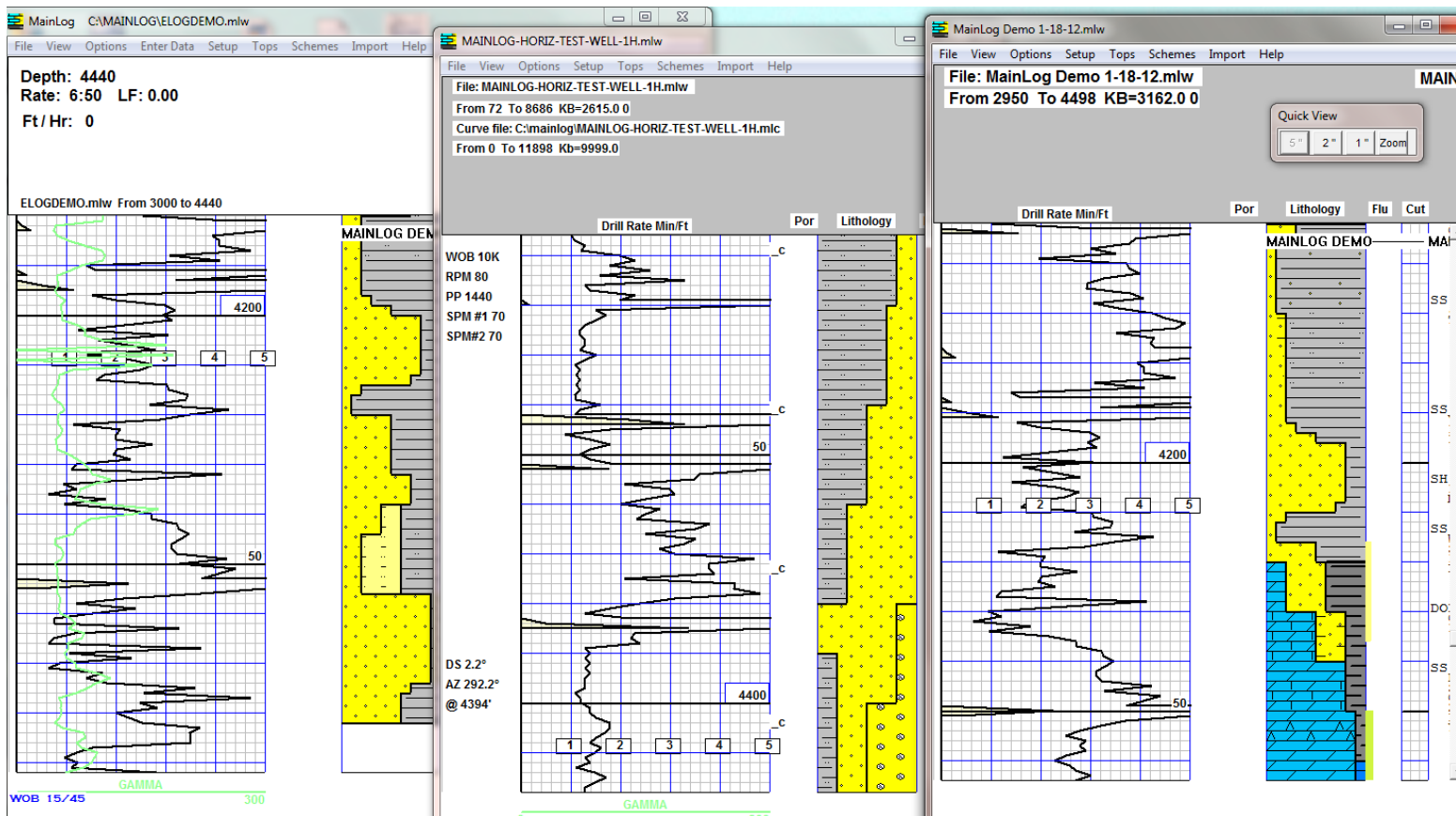


A third way to correlate is by clicking the MainLog icon and opening another copy of MainLog. You will get a message that only one copy of MainLog can be in drilling mode at a time, but just

click OK.



MainLog will open and then go to **File\Open** and select the mudlog you want to view and correlate with. You then resize each log and view them side by side. In fact you open as many MainLog files at the same time and view them on screen.



A good way to open an offset well is to create a shortcut to it on your desktop. This can be easily accomplished by going to the directory the wells are in; more than likely c:\mainlog or c:\mainlog\archives and **right click** on the <filename.mlw> and select “**Create shortcut**”. Next just

left click & drag on the shortcut to the desktop.

