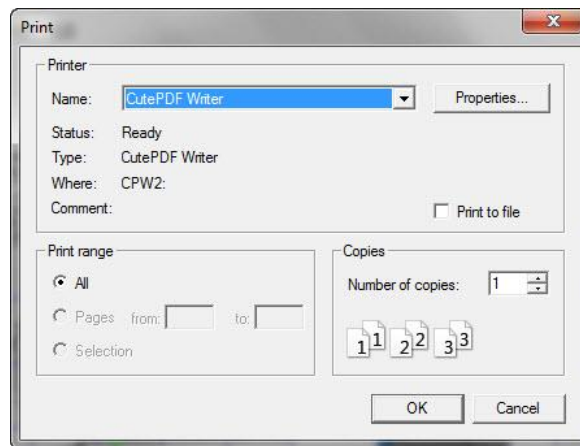


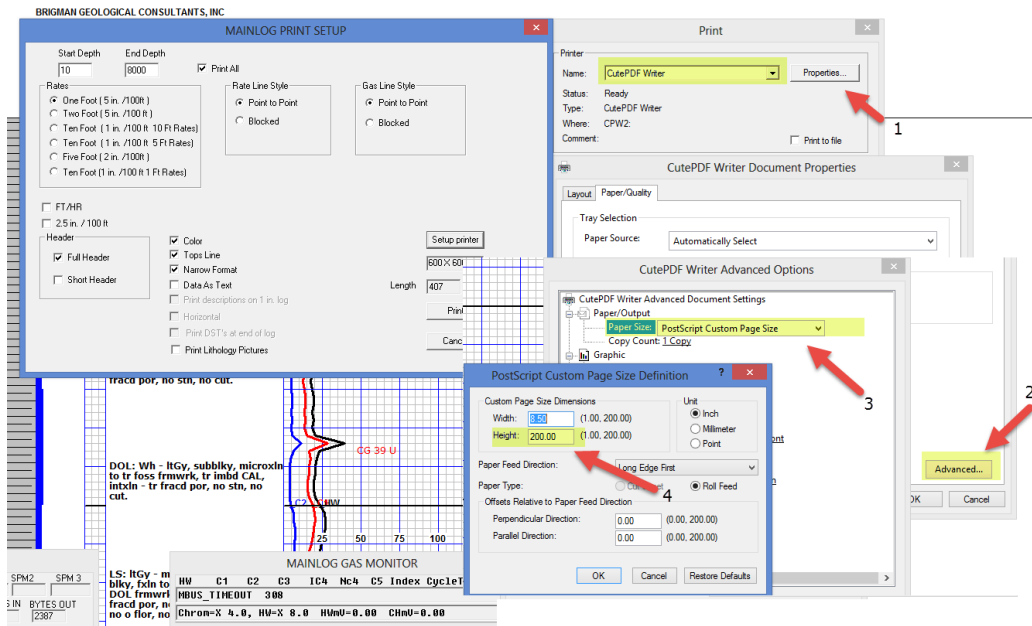
2/19/16

Most know how to create a PDF from MainLog; however, some may not know how to let MainLog automatically name the PDF to the filename or how to create a PDF of the mudlog with no or a limited number of page breaks (depends on length of log).

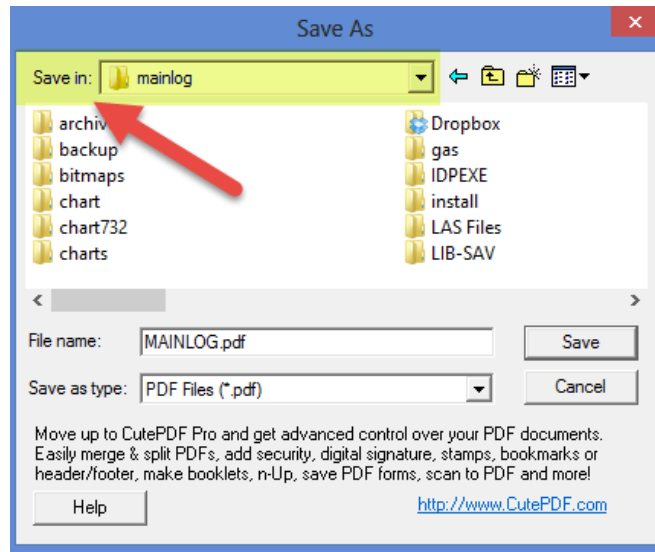
To create a PDF file go to the “Print” function and click on “Setup Printer”. Choose the PDF driver to create the file. You must have a PDF program installed on your computer such as, Adobe, if you do not, you can get a “freeware” version by going to www.cutepdf.com.



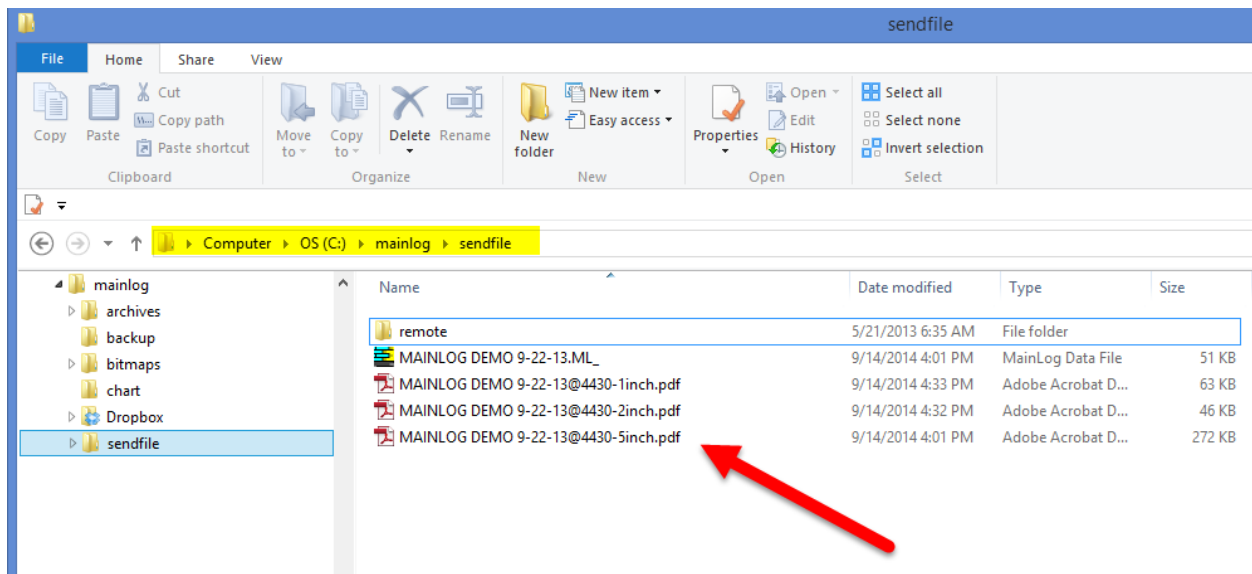
If you need to create a log with no page breaks click on “Properties” then “Advanced” and under “Paper Size” select “Postscript Custom Page Size”. This will bring up a dialog where you can change the page Height. Type in 200 and click OK on each of the dialogs as you close out until the print dialog is left. At 200 inches there will be a page break about every 4000 feet of log.



After selecting the PDF program and mudlog parameters, click **“Print”**. The file will be created and default to the name, “Mainlog.pdf”. At this point you have the option of renaming the file and saving it to any directory or **if you choose to save the file to the “mainlog” directory**, MainLog will automatically rename the file to the well name, depth it was created, type log that was printed, (5”, 2” or 1”) and save a copy to the “Sendfile” folder ready to e-mail. Also



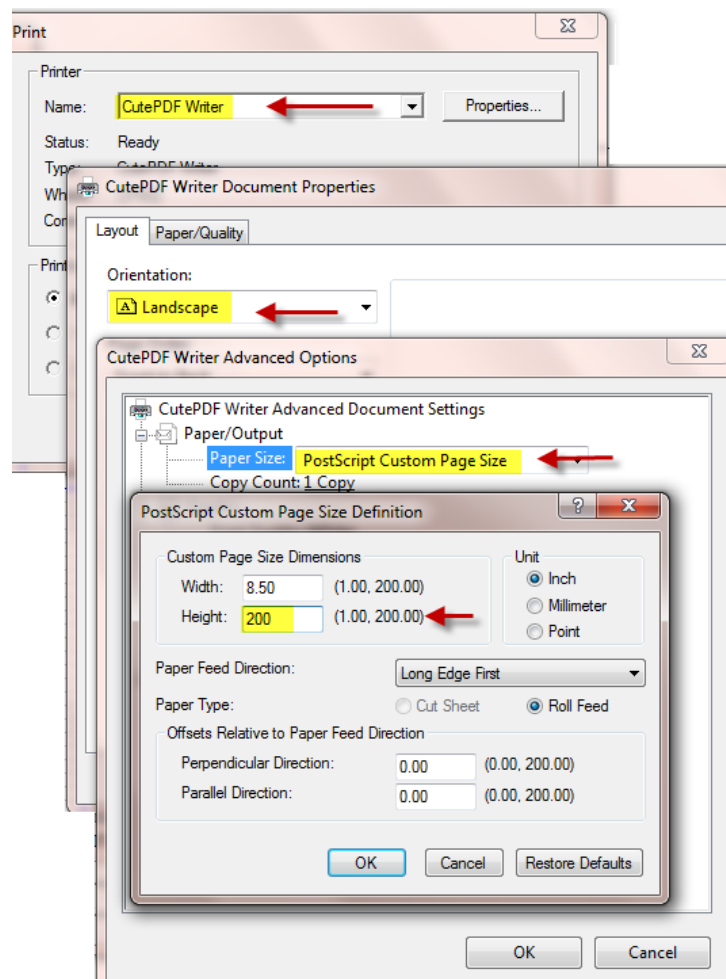
****When a “ML_” file is created from “File\Sendfile” for e-mailing, the PDF file is not included and must be attached separately. Also, all pdf files in the sendfile directory will be deleted when the ml_ file is created, so if you have to e-mail PDF files along with the MainLog file, create the “ml_” first, then the PDF’s.**



There may be a 10 second delay before the file shows up in the sendfile folder. **IMPORTANT!! Create the sendfile FIRST**, and then the PDF or MainLog will delete the PDF when it creates the ml_.

- Remember that you can also create a PDF of the horizontal log.

In order to create a horizontal PDF it first has to be on screen, (“Horizontal will be grayed out in Print Setup if it is not on screen). Click on **View Horz** from Quick View, then click **File/Print**, and select “**Setup Printer**”. Choose the PDF driver and go to “**Properties**”. The print orientation must be on “**Landscape**”. If a continuous log is required, select “**Advanced**” and set the “**Paper Size**” to “**PostScript Custom Page Size**” and set the height to 200 (inches).



Select “OK” on all the dialogs and then print.