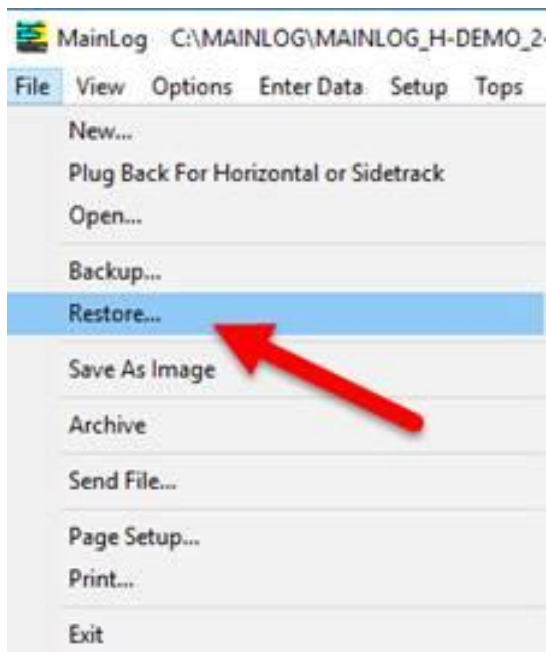


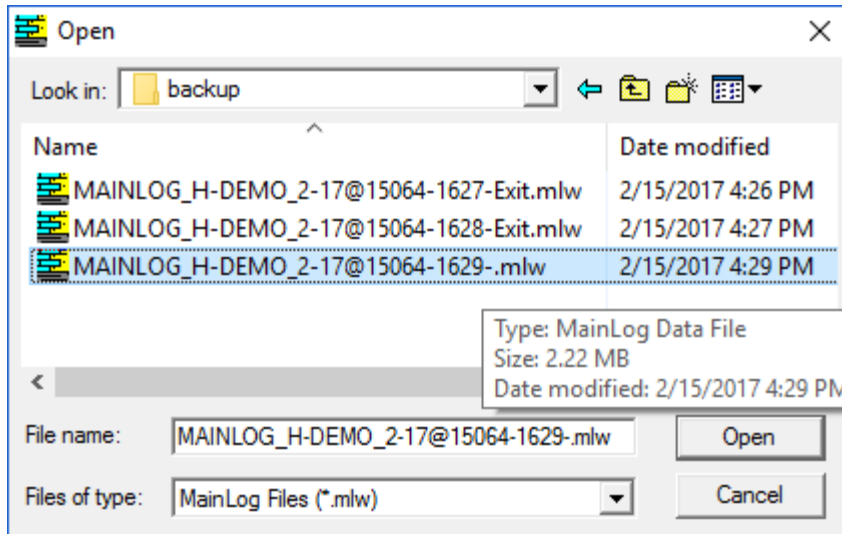
Dear Clients,

Today's "Did You Know?" concerns "restoring" the mudlog, should data be accidentally deleted from correcting the file depth or from a possible computer or program crash. **It is highly recommended that when starting a well that a thumb drive is plugged into the computer.** If the computer should totally crash, any backups on the computer cannot be retrieved, so a thumb drive **is a must.**

Every time a logger makes a **negative depth correction, or exits the program normally,** MainLog automatically makes a backup of the mudlog file at the **depth and time** of the correction or when an exit was made, and places it in the **c:\mainlog\backup** folder.

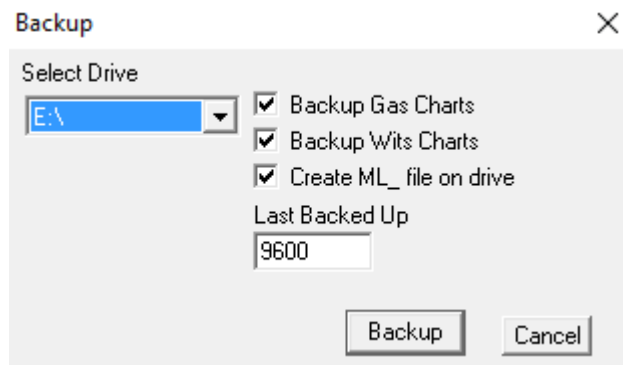
This feature enables the logger to restore back to the depth the correction was made at if a depth correction was made in error. (i.e. < [filename@9900-812.mlw](#) >). While in the MainLog program, click on **File\Restore** and from the **c:\mainlog\backup** folder you can click on the file name containing the depth you want to restore from. The log will be restored to the depth you selected.





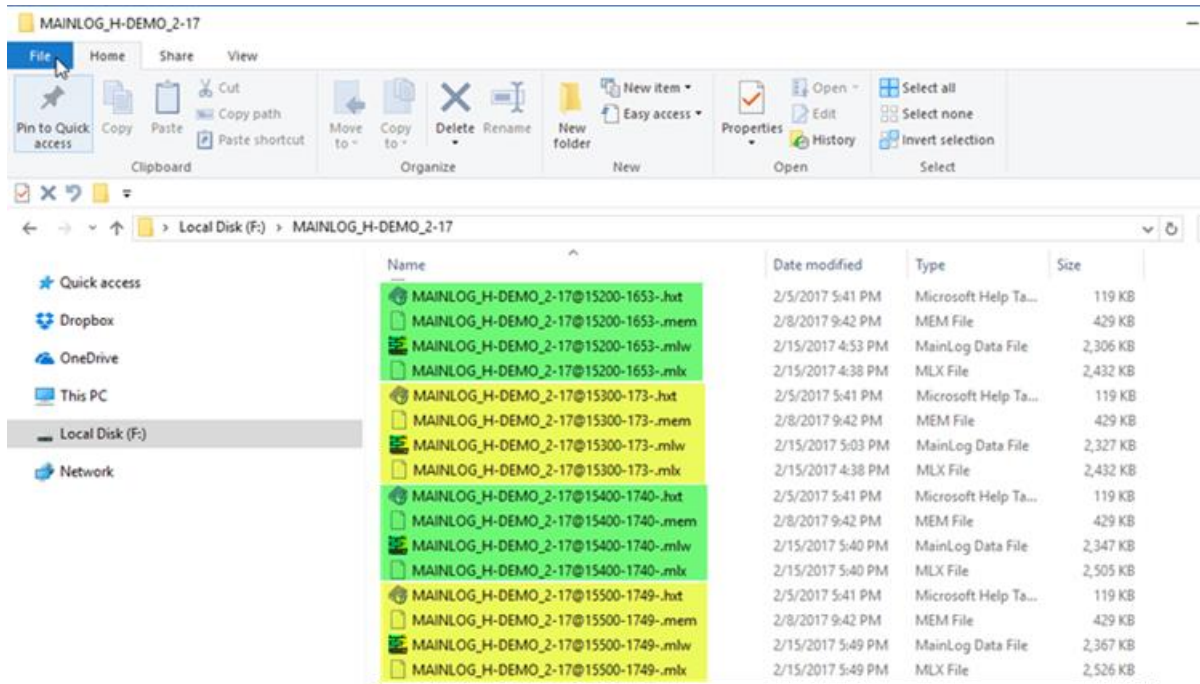
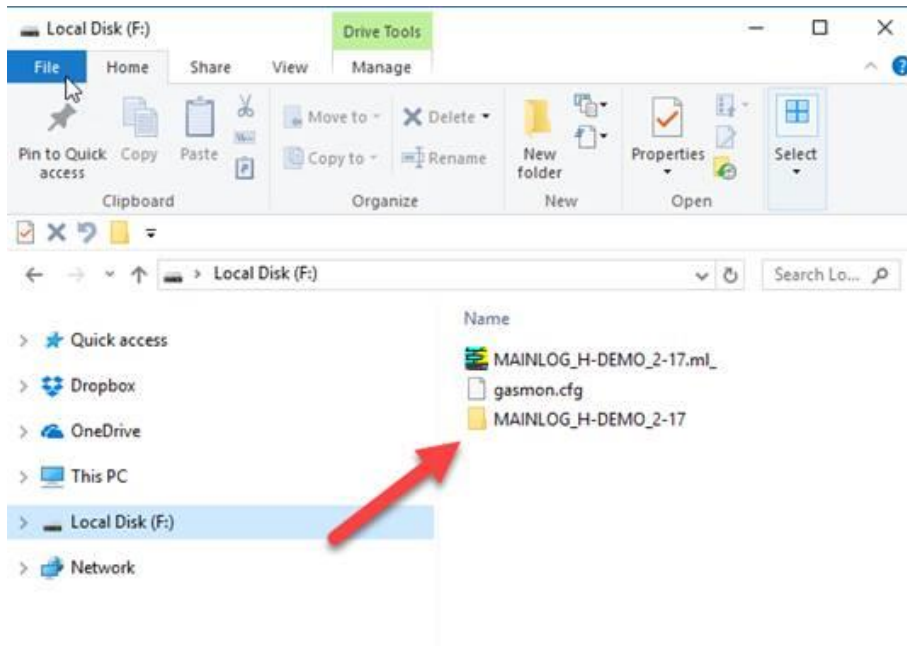
If you've been backing up to your external thumb drive, (and you should be), you can also restore from there as well. If your hard drive crashes you will be able to restore from the thumb drive to the last point that the file was backed up to. If you are unsure what to do call your supervisor or us at MainLog.

The first time you back up **you will need to select the Flash Drive you are backing up to.** *Backing up to the "C" drive will not help you if your hard drive crashes. You must back up to an external drive. (Recommend a USB flash drive) Be sure it is an external drive and not a partition on the computer's internal hard drive.*



Once the drive is selected and then backed-up, MainLog will automatically back up the file every 100 feet, **but will only backup** the mudlog file (.mlw), the Custom Track file (.mlx), the memo file (.mem), and the Horizontal Memo file

(.hxt). **This will occur every 100 feet, as long as the flash or thumb drive remains plugged into the computer.** *The logger still needs to back-up manually, a few times each tower, and at the beginning of each tower, so other files associated with the well, such as, reports, header, color files, etc. are backed up.*



From the example above you can see the depths that the log was backed up to on the thumb drive. To restore from the thumb drive from MainLog, click on **File\Restore**, and then select the thumb drive and depth you want to restore from.

