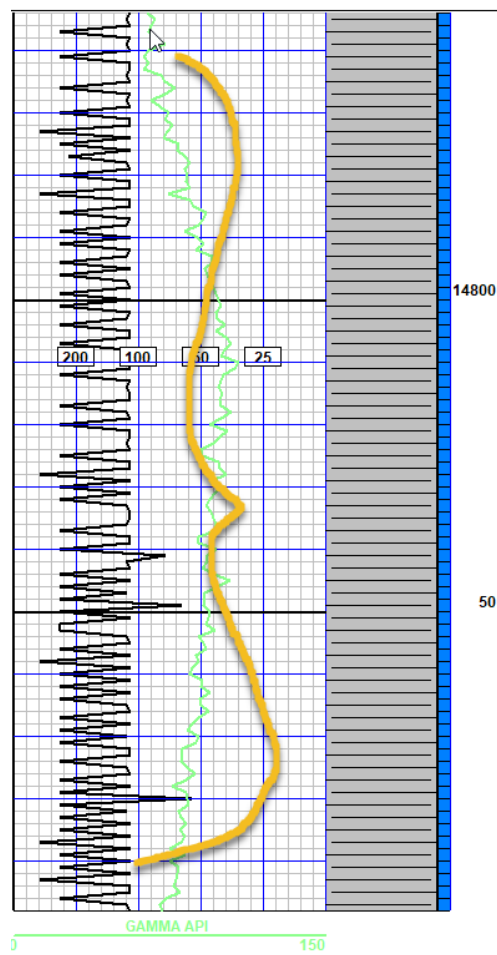
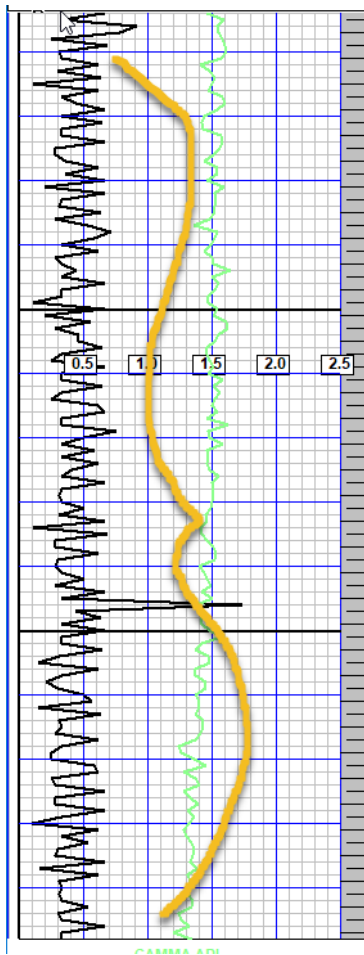


8/15/17

Dear Clients,

If you are seeing a "sawtooth" back and forth pattern in your ROP column, chances are the incoming WITS feed is far below 70%. This can occur if the EDR is Pason and the incoming **“Transmission” is not set to “Request Response”**.



From menu on the PASON work station click on:

- Menu
- Setup
- Wits

- Wits Out Workstation
- Transmission: Request-Response

The screenshot shows the PASON EDR software interface. At the top, it displays 'WKSTN' and 'CANVASBACK 13 FEDERAL 2H SILVER 7' with a timestamp of 14:36:08. Key drilling parameters are shown in large boxes: Hole Depth (644<sup>3</sup> FEET), Bit Depth (644<sup>3</sup> FEET), Hook Load (35 kLBS), Weight On Bit (35.5 kLBS), ROP (34.5 FT/HR), Rotary (64 RPM), and SPP (1013 PSI). Below these are tabs for 'WITS In ALL' and 'WITS Out Workstation'. The main configuration area has 'Custom' and 'Standard' tabs, a search bar, and a 'Transmission' dropdown set to 'Request-Response'. A table lists parameters with checkboxes for enabling them. A red callout box points to the 'Transmission' dropdown and the 'Bit Depth' checkbox, containing the text: 'Set "Transmission" to "Request Response". Make sure all the drilling parameters you need are checked'. A 'Mainlog Wits Feed' window is open, showing a data table. At the bottom are buttons for 'Import', 'Export', 'Factory Reset', 'Save', 'Cancel', and 'Exit'.

**Set "Transmission" to "Request Response". Make sure all the drilling parameters you need are checked**

Enable	Code	Name
<input checked="" type="checkbox"/>	0105	Date
<input checked="" type="checkbox"/>	0106	Time
<input checked="" type="checkbox"/>	0108	Bit Depth
<input checked="" type="checkbox"/>	0110	Hole Depth
<input type="checkbox"/>	0112	Block Height
<input type="checkbox"/>	0113	On Bottom ROP
<input type="checkbox"/>	0115	Hook Load
<input checked="" type="checkbox"/>	0117	Weight on Bit
<input checked="" type="checkbox"/>	0119	Rotary Torque

DEPTH	BIT DEPTH	WOB	RPM	TORQUE	PP	SPM	SPM2	SPM3
8700.84	8700.84	30	95	1838	2000	83	98	
FLOW	PIT VOL	GAIN / LOSS	RTG	AT	PERCENT	BYTES IN	BYTES OUT	
40	40		135	9228.2	100.0	1565	92	

If you have any questions or if you see this issue and you are not receiving WITS from a Pason EDR, please contact us. As always, we appreciate your business.