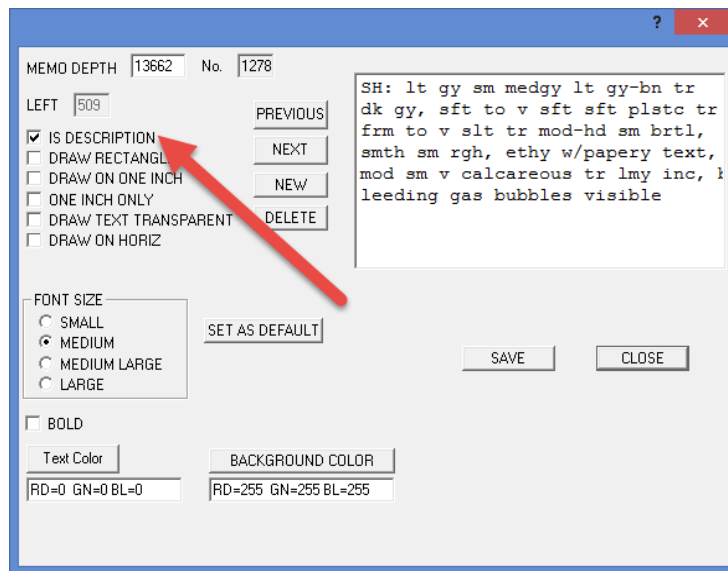


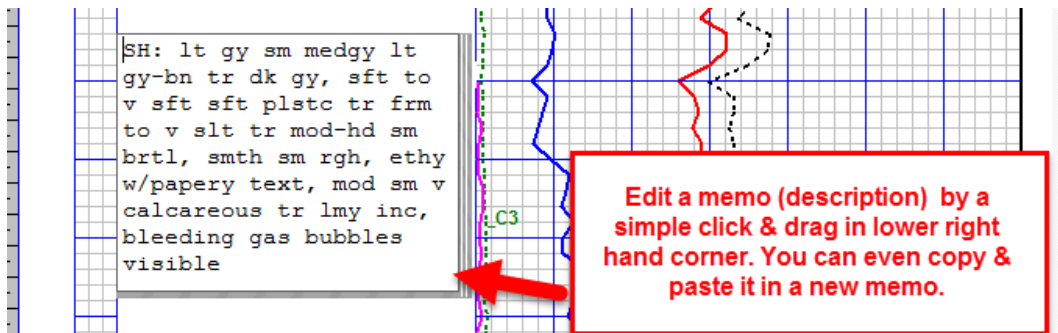
Memos as Descriptions

Note: Memos must be turned on in Schemes to be functional.

Memos can be used as descriptions by selecting it in the Memo edit dialog. (Right click on the memo to open the dialog) Choose the font size, color, background color, case type and save it as a **“Default”** if desired.



MainLog will automatically place it in the description column. From there it can be dragged up or down only, or easily opened for editing or right click on it to get the Memo Edit dialog to change font size & color.



If you right click on the memo & open the dialog you can check “New” and type in a new depth and create a new Memo at the depth you selected.

All Descriptions as Memos

To use Memos as the default for Descriptions go to **Schemes** and under “Mudlog Data” **uncheck “Descriptions” & check “Memos”**. When you double click in the description column a memo dialog box opens and you can type in your description. **With this setting the old method of doing descriptions is disabled.**

