

Dear Clients,

It has come to our attention that many loggers are not aware that when printing a PDF of the log, with **Custom Tracks on**, that the page width can be made wider to accommodate the columns and not compromise the quality of the log. If the page width is unchanged at letter size, (8.5”) with Custom Tracks on, MainLog will compress the log to fit the page, which will usually result in a less than optimal PDF.

Although the ability to change the width has always been there, it is not something that has been in plain view. The change must actually be made in the PDF driver setup, but we have made improvements on the print dialog in Mainlog, that will assist the logger in what width value to use when printing a PDF with Custom Tracks on. Below is an excerpt, from the updated manual, with instructions on how to accomplish this. An attached PDF of this “Did You Know?” is attached for your distribution.

PDF's with Custom Tracks On

When creating a PDF **with Custom Tracks on**, many loggers are not aware that they can **make the page wider**, which is highly recommended and should be done. If left at “letter” or 8.5” wide, MainLog will compress the log width to fit the page, which has limits. If the width is set appropriately no compression is needed, and the PDF will look much better. With Custom Tracks off, the “letter” setting is fine and making the page wider will have no effect.

With Custom Tracks on, click **File/Print**. The print dialog will display the width value needed to properly print the PDF. It will also display the length (height) of the print job which can be used to minimize page breaks on the PDF. (200 inches max)

MAINLOG PRINT SETUP

Start Depth: 8450 End Depth: 15140 Print All

Rates:

- One Foot (5 in. /100ft)
- Two Foot (5 in. /100 ft)
- Ten Foot (1 in. /100 ft 10 Ft Rates)
- Ten Foot (1 in. /100 ft 5 Ft Rates)
- Five Foot (2 in. /100ft)
- Ten Foot (1 in. /100 ft 1 Ft Rates)

Rate Line Style:

- Point to Point
- Blocked

Gas Line Style:

- Point to Point
- Blocked

FT/HR 2.5 in. / 100 ft

Header:

- Full Header
- Short Header

Color Tops Line Narrow Format

Data As Text Print descriptions on 1 in. log

Horizontal Print DST's at end of log Print Lithology Pictures

Print Type label In Header

Width: 10.3 Length: 342

Setup printer

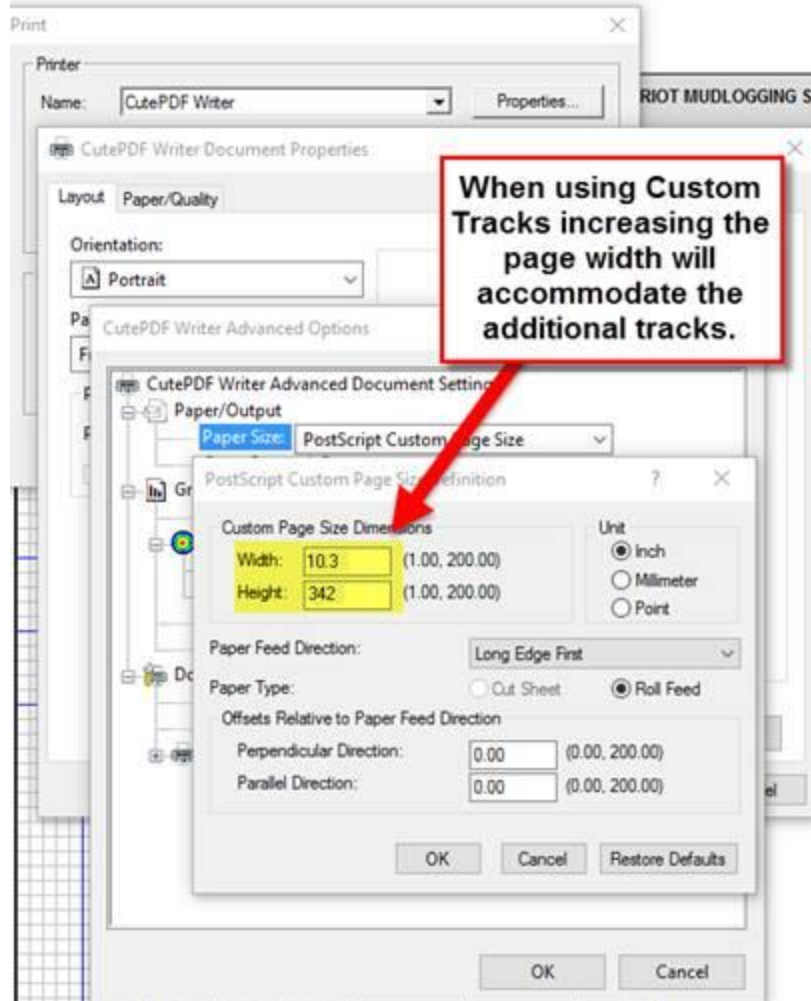
600 X 600

Print

Cancel

With Custom Tracks on, to get the best quality PDF, set the paper width to value shown. (Select Postscript Custom Page Size)

Click on **“Setup Printer”** and select the PDF printer driver. Next go to **“Properties”** and select **“Advanced”**. Set the **“Paper Size”** to **“PostScript Custom Page Size”**. Change the **“Width”** to the recommended value and, if needed, the height (length) to minimize page breaks. Then click **“OK”** on each of the dialogs, then **“Print”**.



This will make for a better looking PDF of the log, correctly accommodating the font size and width size of each of the columns on the log.