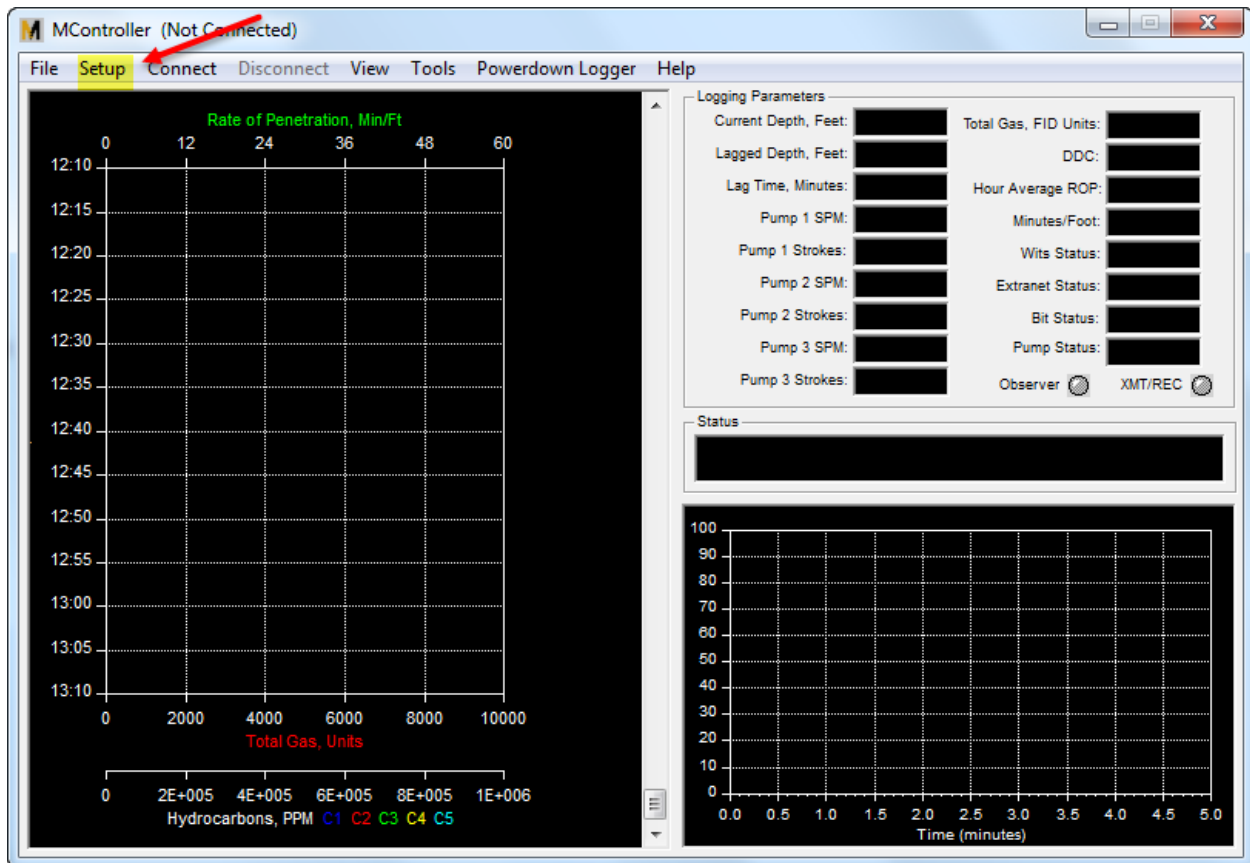


4-3-14

## MainLog and MLogger Set-up Instructions

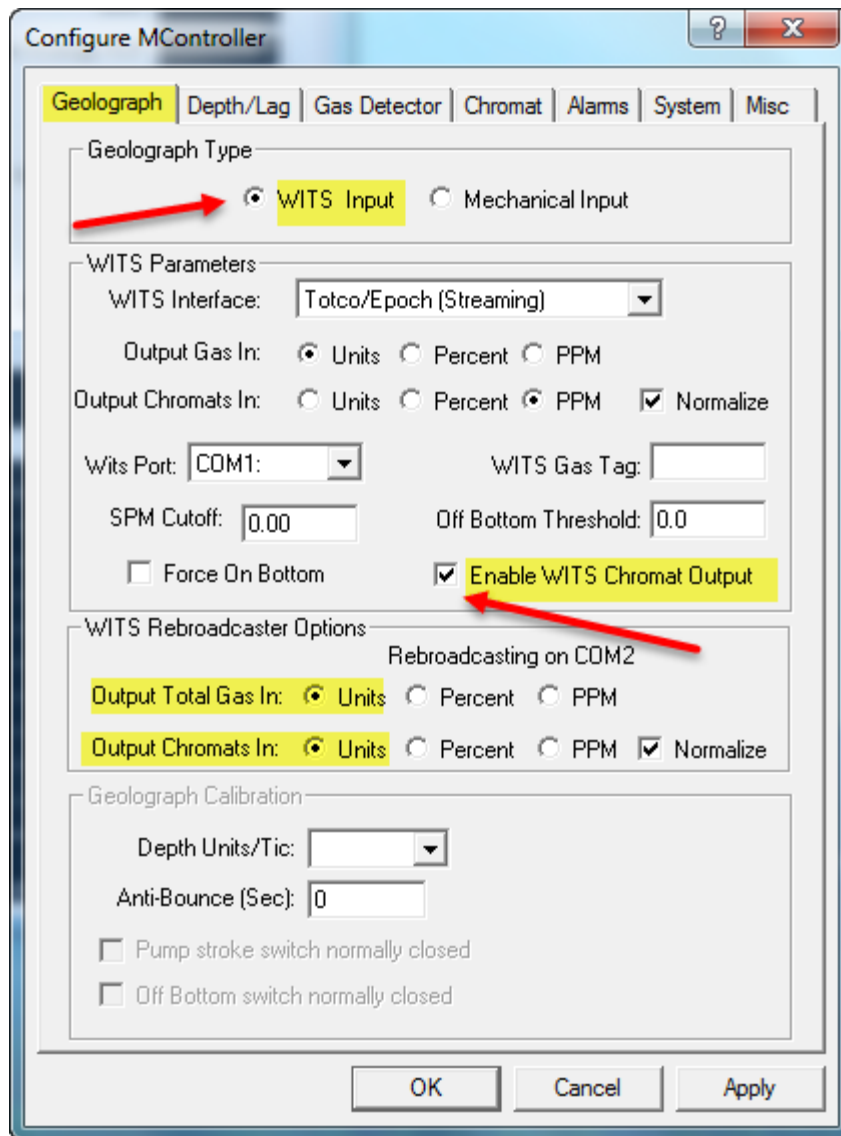
MController version 2.9.7012 (Jan 9, 2014)

From the MController software click the “Setup” tab.



From the “Geograph” tab choose the following:

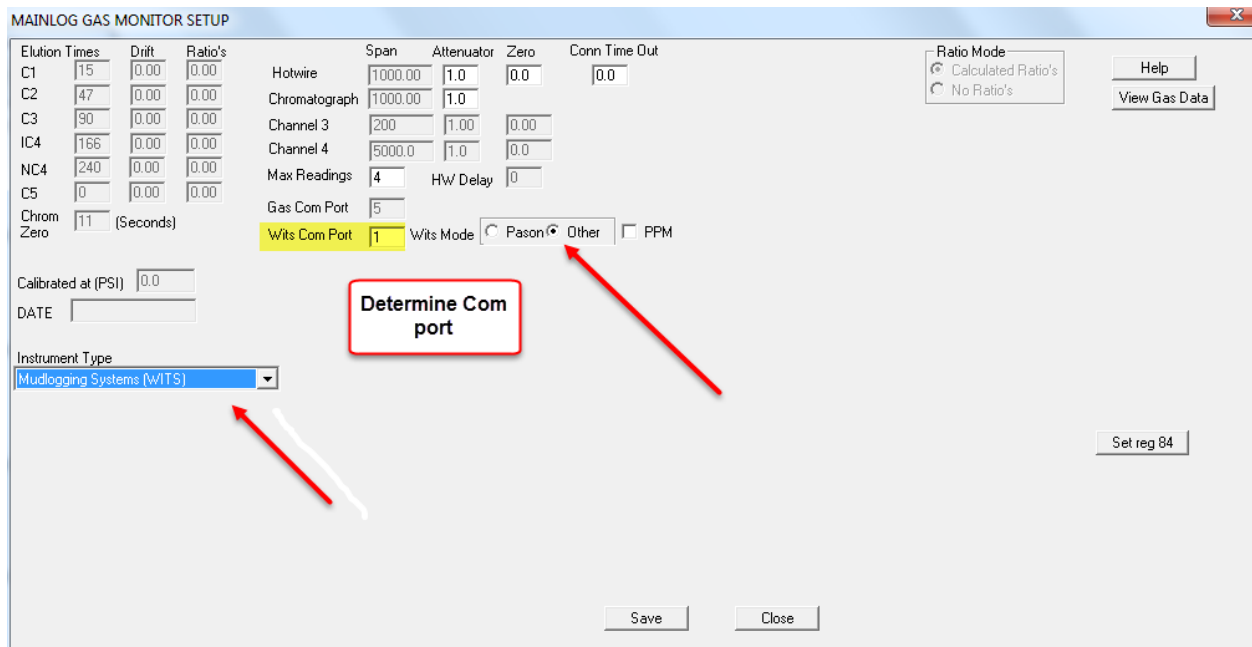
- “Wits Input”
- **Enable WITS Chromat Output** (sends chromat data out to both wits ports; One to MainLog & one to the EDR)
- **Check Output Gas and Chromats to “Percent”.???????**



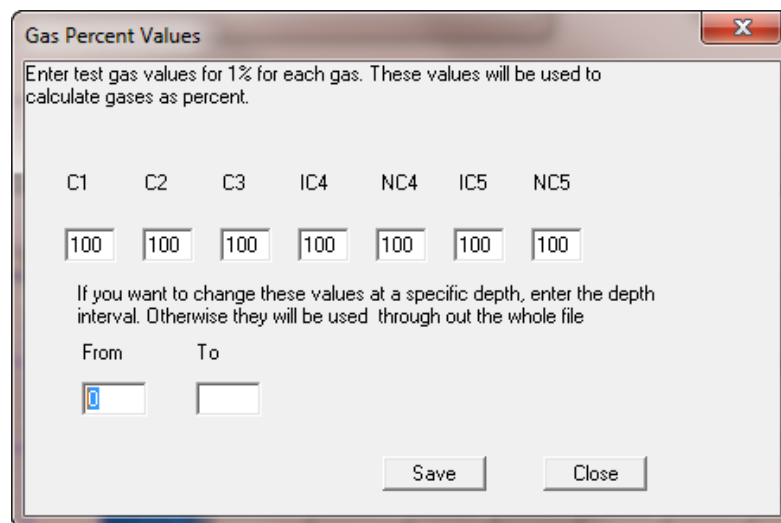
## Settings in MainLog

- Open the MainLog Program and from the **Options Menu** make sure you are in **“Drilling”** mode.
- From the **“Setup”** tab select **“Gas Monitor Setup”** and set the **“Instrument Type”** to **“Mudlogging Systems Wits”** and **“Wits Mode”** to **“Other”**.

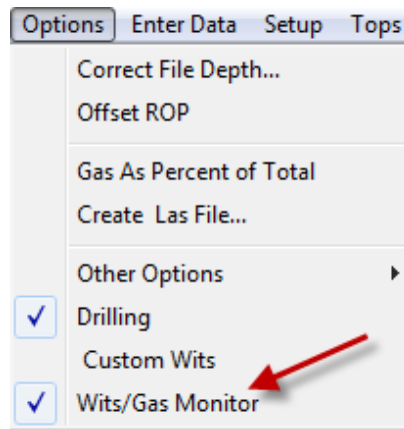
- Also enter in the Com Port number that the wits feed is coming in on. This can be confirmed by going into the computer's Device Manager. Click "Save" then "Close".



- From the "Setup" tab select "Test Gas Values" and make sure they are set to 100 units each.



- From the “Options” tab select “Wits/Gas Monitor” to view the incoming “Mainlog Wits Feed” and “MainLog Wits Gas Monitor” displays.



MainLog Wits Feed Data

DEPTH	BIT DEPTH	WOB	RPM	TORQUE	PP	SPM	SPM2	TOTGAS
8690.00	8690.00		60		2000	80	80	920.00
FLOW	PIT VOL	GAIN / LOSS			PERCENT			
20					100.0			

MAINLOG GAS MONITOR

HW	C1	C2	C3	IC4	Nc4	IC5	NC5	Cycletime
251	19	43	58	73	73	96	96	118