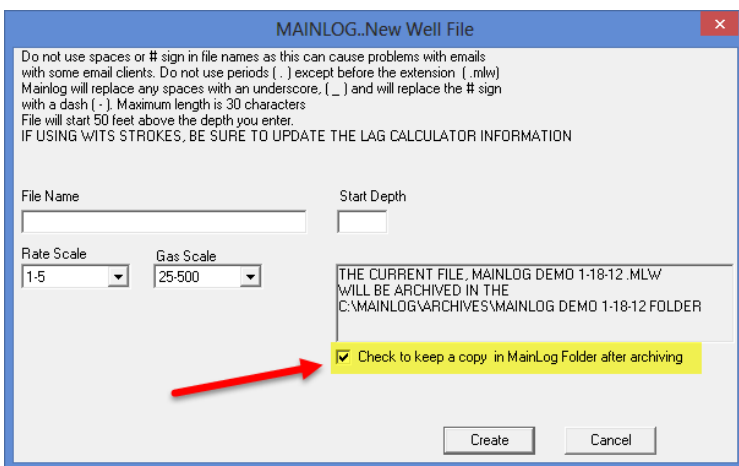


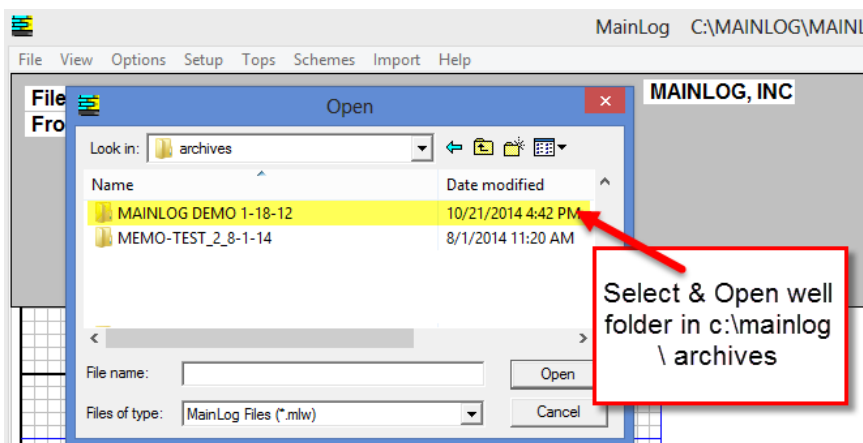
## Tips on Starting a Horizontal File

We are getting feedback that some operators will drill several vertical holes in a field and then return to drill the laterals at a later date. Some companies are using the loggers to log both the vertical and horizontal, while others are just logging the horizontals. Following are tips on how to proceed with MainLog for those scenarios.

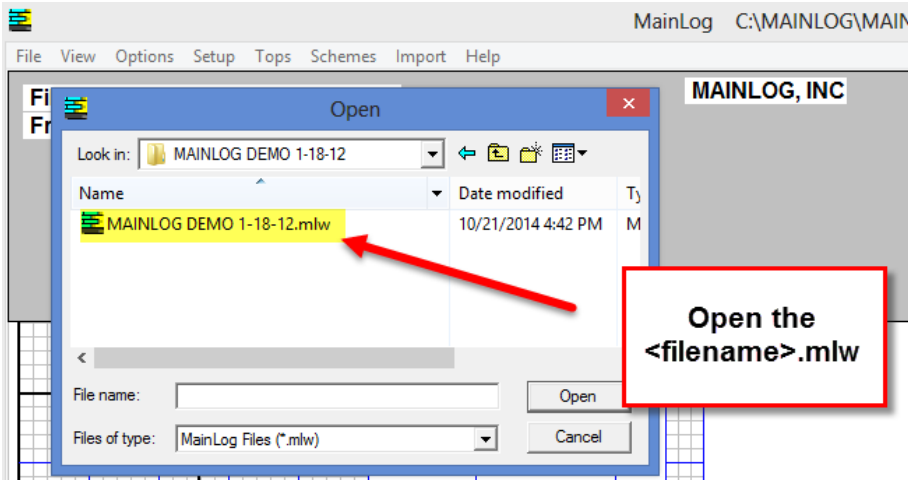
With MainLog, here is what needs to be done when logging the vertical wells first and then returning to log the horizontals at a later date. When you have logged a vertical hole and moved on to log another vertical hole, make sure that when you create the new well, to check the box, **“Check to keep a copy in MainLog Folder after archiving”**. By doing this, when you return to log the lateral, the file will already be in the c:\mainlog folder which you can select from the **File\Open** menu. (Assuming your logging with the same PC)



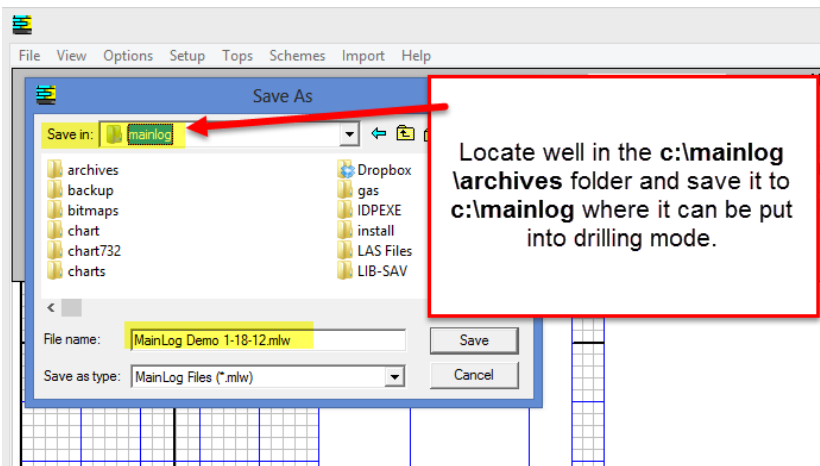
If by chance you did not check the box when creating a new well, the <filename.mlw> can be accessed from MainLog by going to **File\Open** and browse to **the c:\mainlog\archives\<filename> folder.**



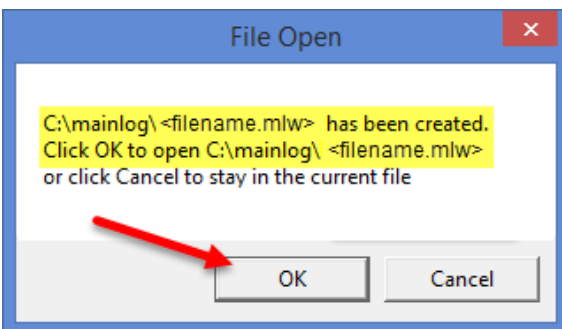
Select and open the <filename.mlw>.



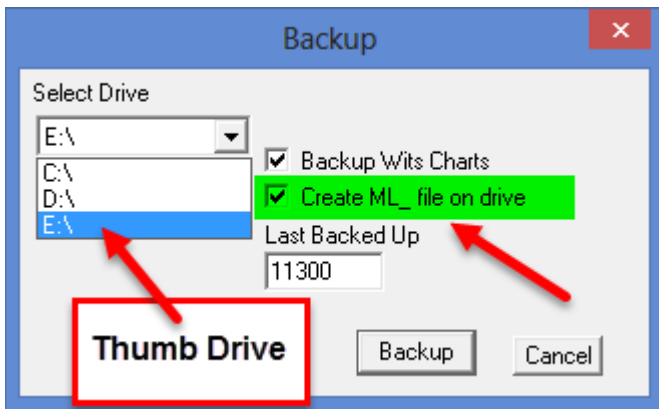
Once the log is open do a “File\Save As”, and save it to the c:\mainlog folder.



By saving it to the folder, c:\mainlog, you will get the following shown message below, and by clicking **OK**, MainLog will automatically open the file in the c:\mainlog folder, that can then be opened in drilling mode.



\*\*If you are logging the lateral with a different logging unit and key, you will have to save the <filename>.ml\_ to a thumb drive. The easiest way to accomplish this is to put in a thumb drive and from MainLog do a “File\Backup” to that drive. Be sure to check the box, “Create ML file on drive”.



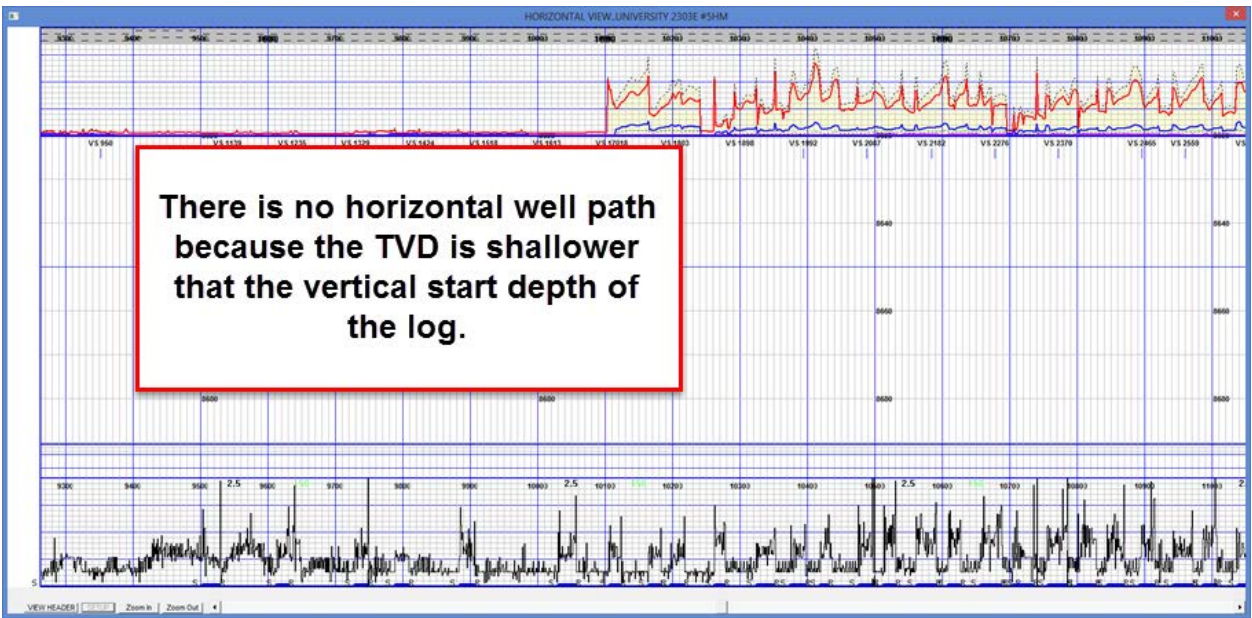
Once copied to the thumb drive, follow these steps:

- Close MainLog on the logging computer & **remove** the Drilling Key.
- Plug in the thumb drive with the <filename>.ml\_ file.
- Browse to the thumb drive and double click on the <filename>.ml\_ file to open the log. MainLog will automatically copy all the files to the c:\mainlog folder.
- Close MainLog and plug in the drilling key.
- Start MainLog.

### **Starting Lateral Wells at the Kickoff Point**

When logging only the lateral portion of a well, **it is a must that the files start shallower than any TVD value in the well.** The TVD of the lateral has to exist in the vertical portion log.

This is especially critical if the lateral is being steered up dip. In some instances there may be a “buffer zone” well above the kick off point. For example, if the kickoff point of the well is at 5000 feet, you may need to have the file start at 4800 feet if the TVD is going to be above 5000. In the example below there is no horizontal path on the log because the TVD depths were shallower than the start of the log file.



**Tip:** Before starting the file, see what the proposed well path and TVD are to determine what depth to start the file at. Obviously you will have to **“correct the file depth”** to the kick off point after you create the file and you will have an area of the log with no data, (was not logged), but you will be able to see and scale your horizontal log.

In short, you cannot enter a TVD that is shallower than the start of the file depth. You will not be able to see it on the horizontal view of the log.

